

OFFICIAL ZONING &  
CITY/ETA BOUNDARY MAP

# CITY OF LINCOLN

COUNTY OF BURLEIGH  
STATE OF NORTH DAKOTA

PART OF SECTIONS 13 & 24  
TOWNSHIP 138 NORTH, RANGE 80 WEST  
AND  
PART OF SECTIONS 7, 8, 17, 18, 19, & 20  
TOWNSHIP 138 NORTH, RANGE 79 WEST

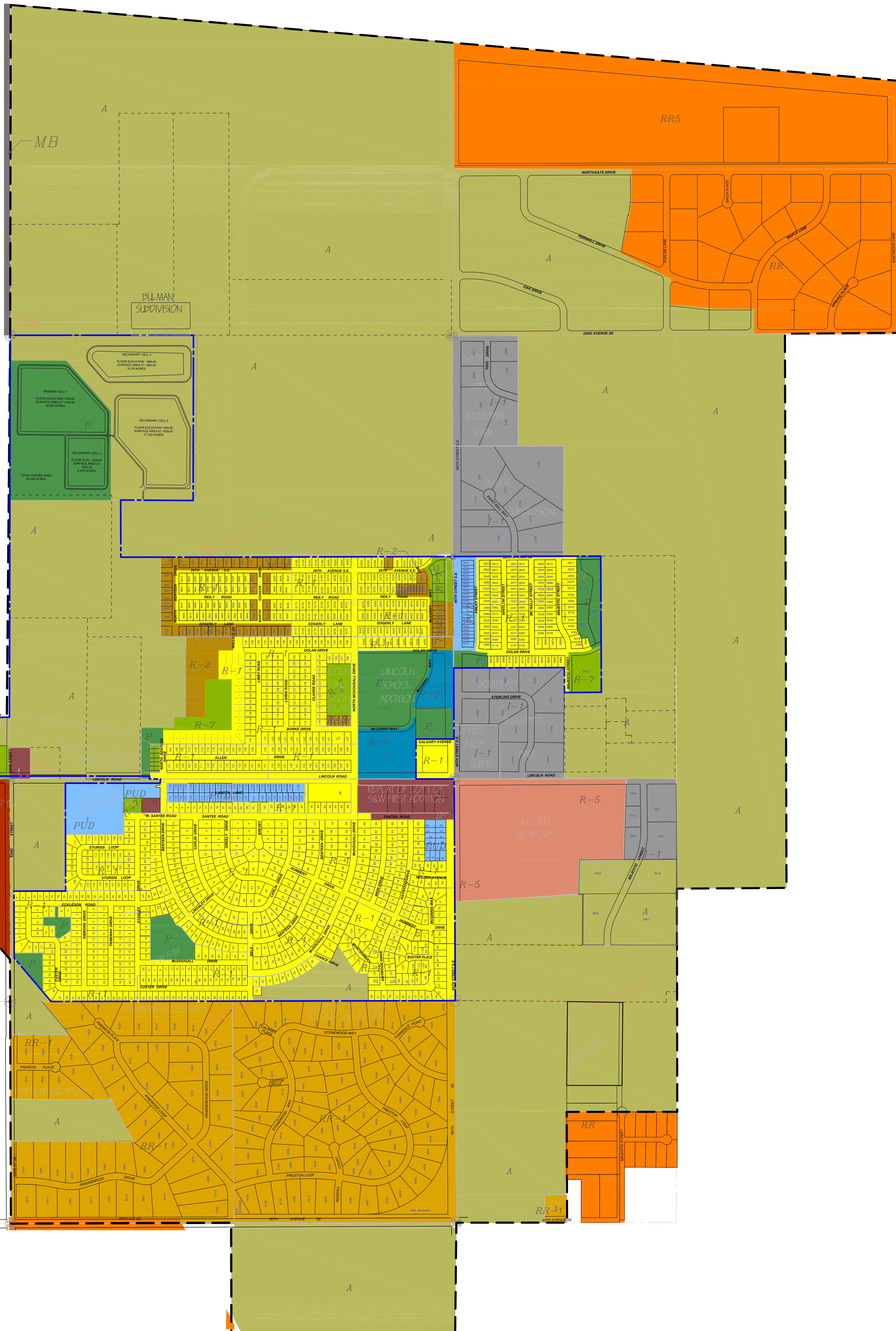
Extraterritorial Zoning Boundary Established January  
24, 2012, by written agreement with the City of  
Bismarck.

**CERTIFICATION**

This is To Certify That This Official Zoning Map  
Supersedes And Replaces The Official Zoning Map  
Adopted March 7th, 2013 As Part Of Ordinance  
Number 9-02-02, Of The City Of Lincoln, North Dakota.

MAYOR: \_\_\_\_\_ DATE: \_\_\_\_\_  
AUDITOR: \_\_\_\_\_ DATE: \_\_\_\_\_  
UPDATED: FEBRUARY 6, 2014

This Document Was Originally Signed  
On February 6, 2014 By Mayor Robert  
Johnston And Auditor Melanie Kitzan  
And The Original Document Is On File  
At The City Of Lincoln, North Dakota.



SECTION 13

SECTION 24

**LEGEND**

- R-1
- R-2
- R-5
- R-7
- R-9
- C-1
- MU
- I-1
- I-2
- RR-1
- P
- A
- PUD
- RR5 (BURLEIGH COUNTY)
- RR (BISMARCK)
- MB (BISMARCK)
- CG (BISMARCK)
- CORPORATE BOUNDARY
- EXTRATERRITORIAL AREA

